



SARA

Facilitating a Platform to enhance railway sector capacity building & Human Resource Development

6th September, 2023

**LUBINDA SAKANGA
SARA DIRECTOR: TECHNICAL & OPERATIONS**

Southern African Railways Association (SARA)



- Regional Policy advocacy, coordination & harmonization
- Rail development & advocacy
- Rail Stakeholder dialogue
- Rail Manufacture & Resource capacity

SADC Transport Sector Plan key objective:

Identify key hubs and gateways for rehabilitation and development, in order to ensure that the passenger and goods markets are adequately catered for. (2012 SADC RIDMP)

Member States' general objective:

To establish transport, communications and meteorology systems which provide efficient, cost-effective and fully integrated infrastructure and operations, which best meet the needs of customers and promote economic and social development while being environmentally and economically sustainable. (SADC PTCM 1996)

Member States shall facilitate:

The provision of a seamless, efficient, predictable, cost-effective, safe and environmentally-friendly railway service which is responsive to market needs and provides access to major centres of population and economic activity (SADC PTCM 1996)



Guidance from SADC Protocols

1996 SADC Protocol on Transport Communications and Meteorology

- ✓ Integration of regional transport via compatible policies, legislations, rules, standards and procedures
- ✓ Elimination or reduction of hinderances & impediments to the movement of persons, goods and services
- ✓ Broad-based investment to develop, preserve and improve viable strategic transport
- ✓ Restructuring of state enterprises & public entities which are financially independent & commercially viable
- ✓ Optimal utilization of resources and the effective allocation of existing scarce resources
- ✓ adequate own funding and appropriate supplementary funding, amongst others, through recovery of full costs for maintenance of infrastructure and service provision and progressive recovery of full future costs for infrastructure and service provision and use on an equitable basis
- ✓ customer driven service provision characterized by adequate access to basic transport. communications and meteorology services and progressive improvement of service quality
- ✓ improved diversity of services and provision of services on a competitive bid basis through the promotion of fair and healthy competition between service providers in terms of transparent, flexible, predictable and streamlined regulatory frameworks
- ✓ informed decision-making and improved investor confidence to facilitate commercial activity

2012 SADC Protocol on Trade in Services

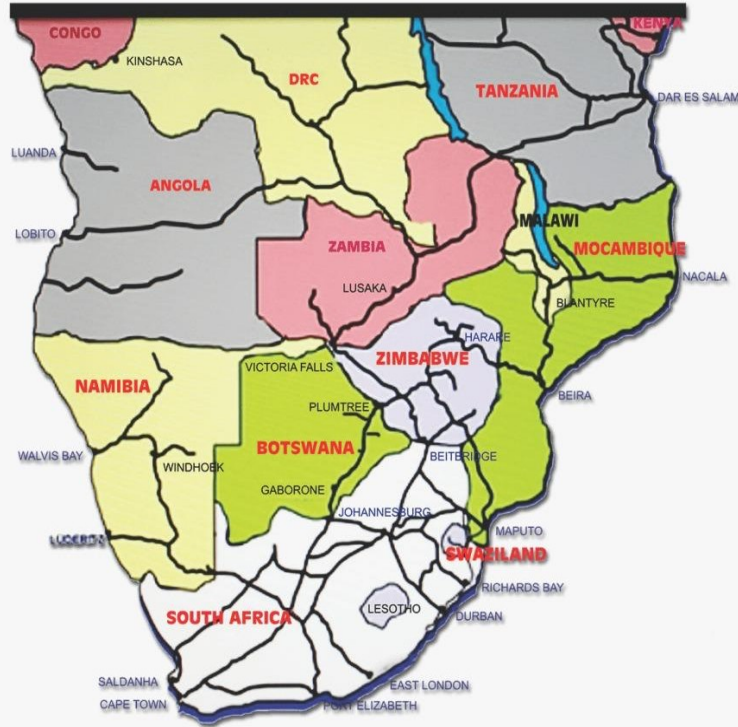
- ✓ Progressively liberalize intra-regional trade in services
- ✓ Ensure consistency between liberalization of trade in services & various Protocols in specific service sectors
- ✓ Pursue services trade liberalization, while fully preserving the right to regulate and to introduce new regulations
- ✓ Enhance the capacity & competitiveness of the services sectors of State Parties

Southern African Railways Association (SARA)



"Together we are better"

RAILWAY MAP OF SARA MEMBERS

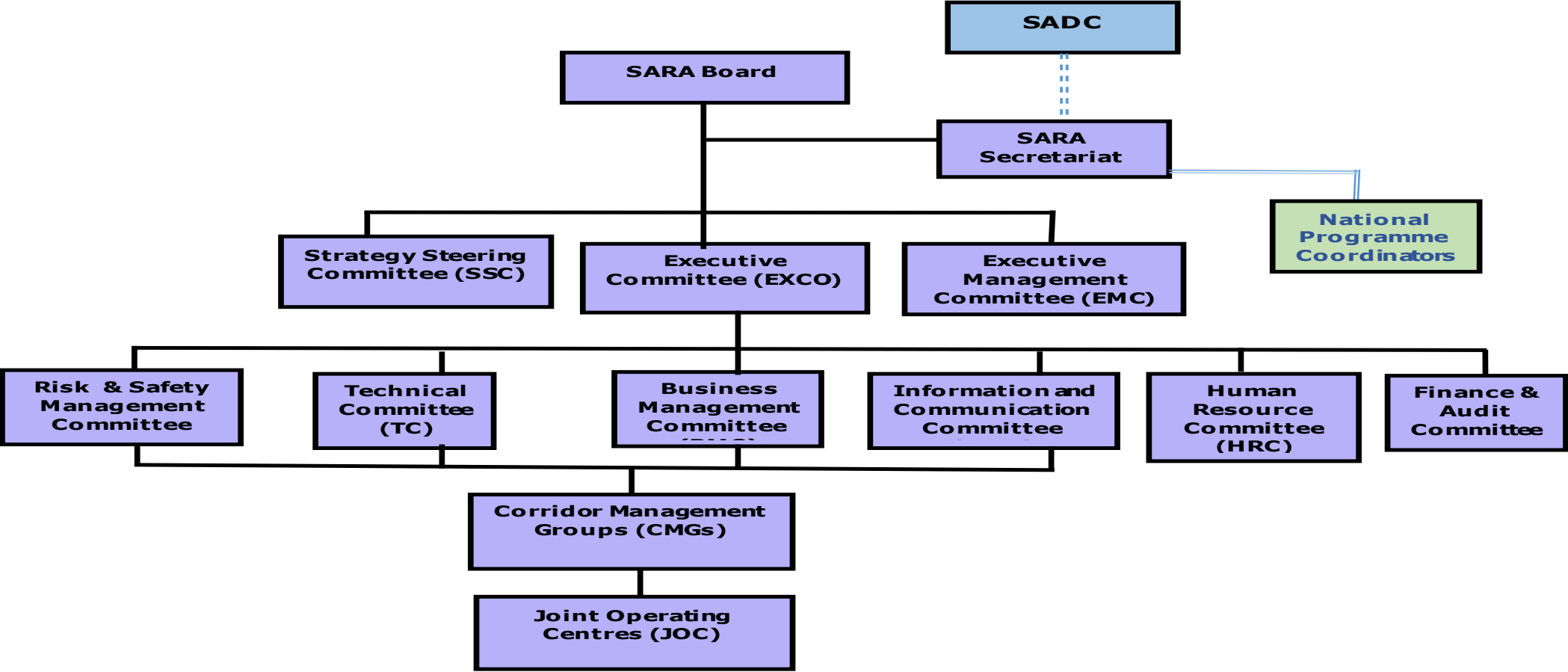


<h3>Mandate</h3>	<ul style="list-style-type: none"> • Est. 1996 Hqs-Harare • Railway specialized subsidiary of SADC • Rail trade & regional integration • Coordinate rail stakeholder dialogue • Mandate Holder for Rail Policy advocacy
<h3>Regional Rail Policy</h3>	<ul style="list-style-type: none"> • Harmonize Regulation • Facilitate Rail Corridor coordination • Facilitate infrastructure development • Promote rail competitiveness • Advocate for fair intermodal competition
<h3>Programmes</h3>	<ul style="list-style-type: none"> • Corridor Operational efficiency • Corridor safety & Security • Promote rail investments • Adaptability to international best practices • Regional socio-economic development • Institutional & human Capital development

SARA Members



Governance Structure



SARA Organizational and Operational Structure

Human Resource & Institutional Capacity Development for Railways



- activated cooperation on applied Research, design and development of standardised railway sector curriculum for SADC;
- established centres of excellence for railway institutional and human capital development;
- standardised learning delivery systems for core-railway programmes;
- Identified best practices and exchange of experiences;
- applied research and development for railway industry enhanced; and
- resources mobilized for sponsorship of learners for railway institutional and human capacity enhancement

Contact us



SARA HEADQUARTERS, HARARE, ZIMBABWE

Email address sara@sararail.org
Office Line +263 772 125 766 / +263 736 777

Mr. Babe Botana

Executive Director
Office line: +263 772 125 767
Mobile: +263 784 932 710
Email: bcbotana@sararail.org

Mr. Lubinda Sakanga

Director Technical & Operations
Mobile: +263 736141711
Email: lsakanga@sararail.org